



Tetra4D Enrich

Version 2017 SP1

Release Notes

Details of new features, updated format support and bug fixes for Tetra4D Enrich

Table of Contents

- Version 20173
 - Definition of Release Types.....3
 - Version Information.....3
 - Installation3
 - Language Support Overview.....3
 - Acrobat Pro Compatibility4
- System Requirements4
- Licensing.....5
 - Message for Tetra4D Enrich existing customers5
 - New Tetra4D Enrich customers5
 - Information about the licensing management solution6
- Format Support.....7
- Updated formats support and Reader/Writer enhancements.....8
 - CAD Reader: PTC CREO8
- New features and enhancements.....8
 - Edit 3D.....8
 - “Multiple parts” selection mode8
 - “Visibility status” definition tool.....9
 - “Transform” tool.....9
 - Starting Console.....10
- Bug Fixes10

Version 2017 SP1

Definition of Release Types

We define each release type as follows:

- **Major release:** A major release associated with an incremented release number (e.g. 2017) and an approximate 12 months' product cycle.
- **Minor release:** An update between major releases that may include support for new file formats, new versions of currently supported formats, and bug fixes. These updates are Service Pack (SP), and are defined with an additional incremented number put aside the major release information (e.g. 2017.1 for the first Service pack of release 2017)
- **Out of cycle patch:** An unscheduled update. These contain few functional updates with the intention to limit impact.

Version Information

Item	Version Number
Tetra4D Enrich	2017.1.x

Notice that the third number is used to differentiate builds of the software, and may not be continuous.

Installation

This version can be installed over any prior installation of Tetra4D Enrich. For more installation information, please refer to the [Tetra4D Enrich Installation Guide](#) or visit our [Learning page](#).

Language Support Overview

Tetra4D Enrich provides support for multiple languages as noted in the table below. However, the language used is controlled by the local Adobe® Acrobat® installation. If there is a Tetra4D Enrich language option that matches the Acrobat installation, then that language is used; if not, Tetra4D Enrich defaults to English.

Tier 1 and Tier 2 are as defined by Adobe Systems.

Tier	Tetra4D Enrich Supported Languages
Tier 1	English, French, German, Japanese
Tier 2	Brazilian Portuguese, Italian, Korean, Spanish

Acrobat Pro Compatibility

The Tetra4D Enrich is a plug-in for Adobe Acrobat Pro. The following table provides information about tested version compatibility. Note that older versions of Tetra4D Enrich may work with newer Acrobat Pro releases, even if compatibility is not explicitly mentioned here.

Tetra4D Enrich	Compatible Acrobat Pro XI/DC Versions
2017.1	Acrobat Pro DC: 2015.000.00000 - to 2015.006.30306 (Classic track) - to 2017.009.20044 (Continuous track) Acrobat 11.0.0 to 11.0.20

System Requirements

Please refer to the [Tetra4D Enrich Installation Guide](#) to access to the system requirements.

Licensing

Message for Tetra4D Enrich existing customers

Tetra4D Enrich 2017 SP1 is a minor release and doesn't require a new license if you already installed and licensed **Tetra4D Enrich 2017**.

If you didn't already install and license **Tetra4D Enrich 2017**, you will need to change your license and activate the seats when **Tetra4D Enrich 2017 SP1** is installed.

Notice that if you are under regular maintenance, you already should have received information to retrieve your serial number for **Tetra4D Enrich 2017**, in an email from tetra4d.com.

Please carefully read the [Tetra4D Enrich Installation Guide](#) for explanations on how to activate your licenses.

New Tetra4D Enrich customers

You should have automatically received information to retrieve your serial number for **Tetra4D Enrich 2017**, in an email from tetra4d.com.

Please carefully read the [Tetra4D Enrich Installation Guide](#) for instructions on how to activate your licenses.

Note: Tetra4D Enrich will run in trial mode for 28 days after completing the installation, providing you with the ability to use the product temporarily without a serial number.

You will have full functionality of the software during the trial period. If you experience any problem during the installation and activation process, please contact support by visiting our [Learning page](#).

Information about the licensing management solution

The licensing management solution for **Tetra4D Enrich 2017 and 2017 SP1** offers flexibility and autonomy to customers to manage their licenses:

- Licensing Tetra4D Enrich can be done directly by customers, without requiring customers to contact Tetra4D support
- Online and offline activations are supported
 - Online activation requires a few actions and is fully performed within the product (no support request, no email communication)
 - In case of offline activation, information to activate the seat has to be communicated through email via submitting a support ticket.
- Activation / deactivation is enabled making it possible to transfer a license from one system to another
 - In cases where a system / license is no longer used and has to be transferred to another one
 - The transfer can be performed directly by the customer

Note:

- The transfer of a license has to be occasional, and is allowed in case of:
 - Computer crash
 - Computer change

The Tetra4D support team is available to answer any questions and to assist whenever needed. To receive assistance from the support team, please contact support by visiting our [Learning page](#).

Format Support

This release supports reading the following 3D file formats:

Format	Version	Extensions
ACIS (SAT)	Up to v23.0	SAT, SAB
Autodesk Inventor	Up to 2017	IPT, IAM
CATIA V4	Up to 4.2.5	MODEL, SESSION, DLV, EXP
CATIA V5	R4 to V5-6R2016	CATDrawing, CATPart, CATProduct, CATShape, CGR
CATIA V6	2011 to 2013	3DXML
I-deas	Up to 13.x (NX 5), NX I-deas 6	MF1, ARC, UNV, PKG
IGES	5.1, 5.2, 5.3	IGS, IGES
Industry Foundation Classes (IFC)	IFC2x Editions 2, 3 and 4	IFC, IFCZIP
JT	Up to version 10.0	JT
Parasolid (X_T)	Up to v27.0	X_B, X_T, XMT, XMT_TXT
PRC	All Versions	PRC
PTC Creo	Elements/Pro 5.0 Parametric 4.0	ASM, NEU, PRT, XAS, XPR
PTC Pro/Engineer	Up to Wildfire 5	ASM, NEU, PRT, XAS, XPR
Rhino	4, 5	3DM
Siemens PLM Software NX	Unigraphics V11.0 to NX 11	PRT
Solid Edge	V19 - 20, ST – ST9	ASM, PAR, PWD, PSM
SolidWorks	Up to 2017	SLDASM, SLDPRT
STEP	AP 203 E1/E2, AP 214, AP 242	STP, STEP, STP.Z
Stereo Lithography (STL)	All Versions	STL
Universal 3D (U3D)	ECMA-363 (1 st to 3 rd editions)	U3D
VDA-FS	Version 1.0 and 2.0	VDA
VRML	V1.0 and V2.0	WRL, VRML

Updated formats support and Reader/Writer enhancements

This section presents the CAD Readers and Writers with related enhancements for the 2017 Tetra4D Enrich release.

CAD Reader: PTC CREO

- **Support for Creo 4**

New features and enhancements

This section presents the new features and enhancements released with this new version of Tetra4D Enrich.

Edit 3D

This new feature offers three very valuable capabilities:

- A “multiple parts” selection mode,
- A “Visibility status” definition tool,
- A “Transform” tool.

“Multiple parts” selection mode

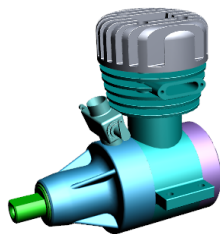
This optional selection mode can be activated by the user in the context of the Edit 3D feature. It makes it possible to add (or remove) parts to a selection set by simply clicking them in the 3D annotation.

The ability to select multiple parts, independently of their respective positions in the assembly structure, is helpful to:

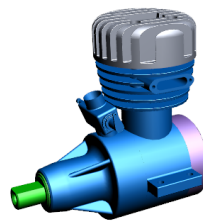
- define the visible parts to create views,
- define displacements of groups of parts when the transform option is activated

Remark:

This selection mode is optional and the standard Acrobat selection mode remains accessible.



Base model



Multiple selected parts

“Visibility status” definition tool

The “Visibility status” tool makes it possible to change the visibility of the selected parts. This tool is accessible in the Edit 3D context to apply to selection sets containing multiple parts.



*Multiple parts are selected
The Visibility status is checked*

*If user unchecks the visibility status
the selected parts become hidden*

Remark:

Turning off the visibility of parts automatically unselect the parts.

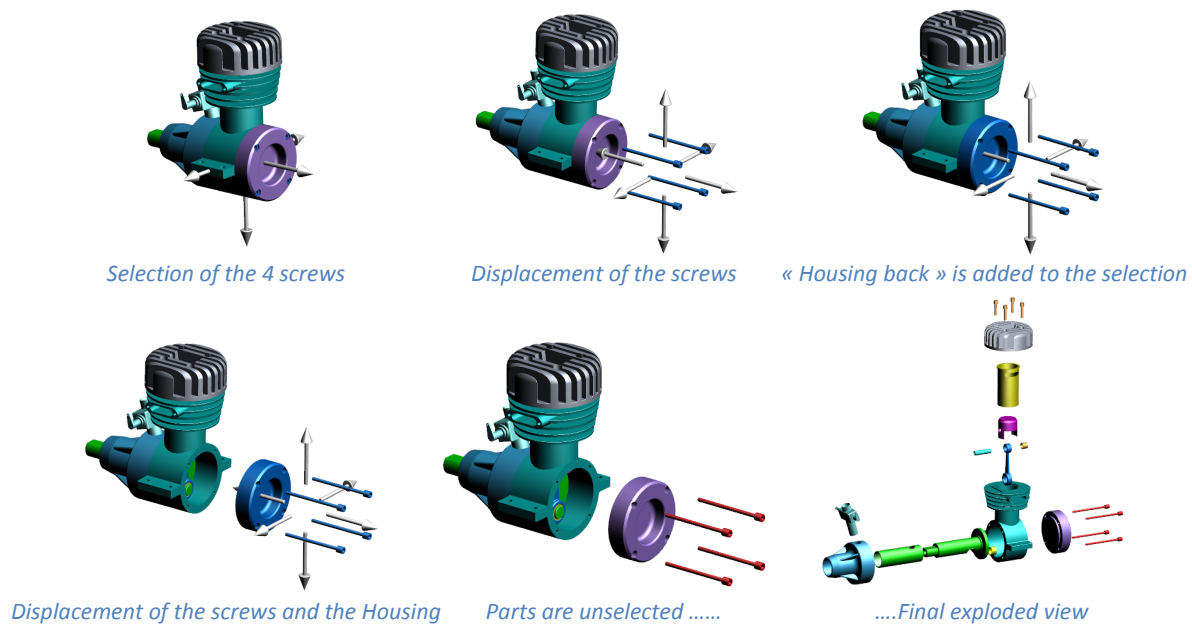
The selection options make it possible to select all the parts, including the invisible ones.

“Transform” tool

The “Transform” tool makes it possible to modify the position of parts. The displacements are translations, and are defined using a “handler” in the 3D annotation.

This feature can be used for example to create “exploded views”, or to simply move one external part of an assembly (a housing) to make it possible to view the inner parts.

This tool applies with a selection set containing multiple parts.



Starting Console

When starting Tetra4D Enrich 2017 SP1, a “Startup console” automatically appears. This console provides the user with:

- A built-in “getting started” guide,
- Samples of 3D PDF created using Tetra4D Enrich
- Templates that can be easily modified to address the customer requirements

Remark:

There are three different templates:

- Visualization of components
- Part list
- Technical data package

The templates are provided with different formats and page orientations.

Bug Fixes

The 2017 SP1 release of Tetra4D Enrich fixes several customers reported issues. Please contact support by visiting our support page if you have questions about any specific issue.