

Getting Started Guide

Design and Create rich interactive 3D PDF Documents

Tetra4D Enrich - Add in for Adobe® Acrobat® Pro

Tetra4D Enrich

Tetra4D Converter

2 of 12

HomeTools

Tetra4D_Enrich_Te... x

1 / 1124%

Key workflows

Edit3DWidgetsActionsAcrobat ToolsHelp

TE

TETRA^{4D} ENRICH

Add 3D

Add 3D attributes

Replace 3D

Add carousel

Add part list (flat)

Add part list (hierarchical)

Add table from CSV

Add table from clipboard

Add search

On button

On 3D view

On 3D part

On table row

Add button

Add text field

Edit object

Set populate method for text fields

Populate text fields from XML

Update a document with a new 3D data

Merge existing CAD attributes with imported attributes from XML file

Add 3D data in the document

Edit an existing Enrich object

Add a search widget

Add a table generated from the 3D data or from an external application

Add a carousel of views

Add actions

Define a title block

Place buttons and text fields

Access to on-line content

←

🏠

→

↺

↻

🔍

↔

↶

↷

📦

📦

📦

📦

📦

📦

📦

📦

Search

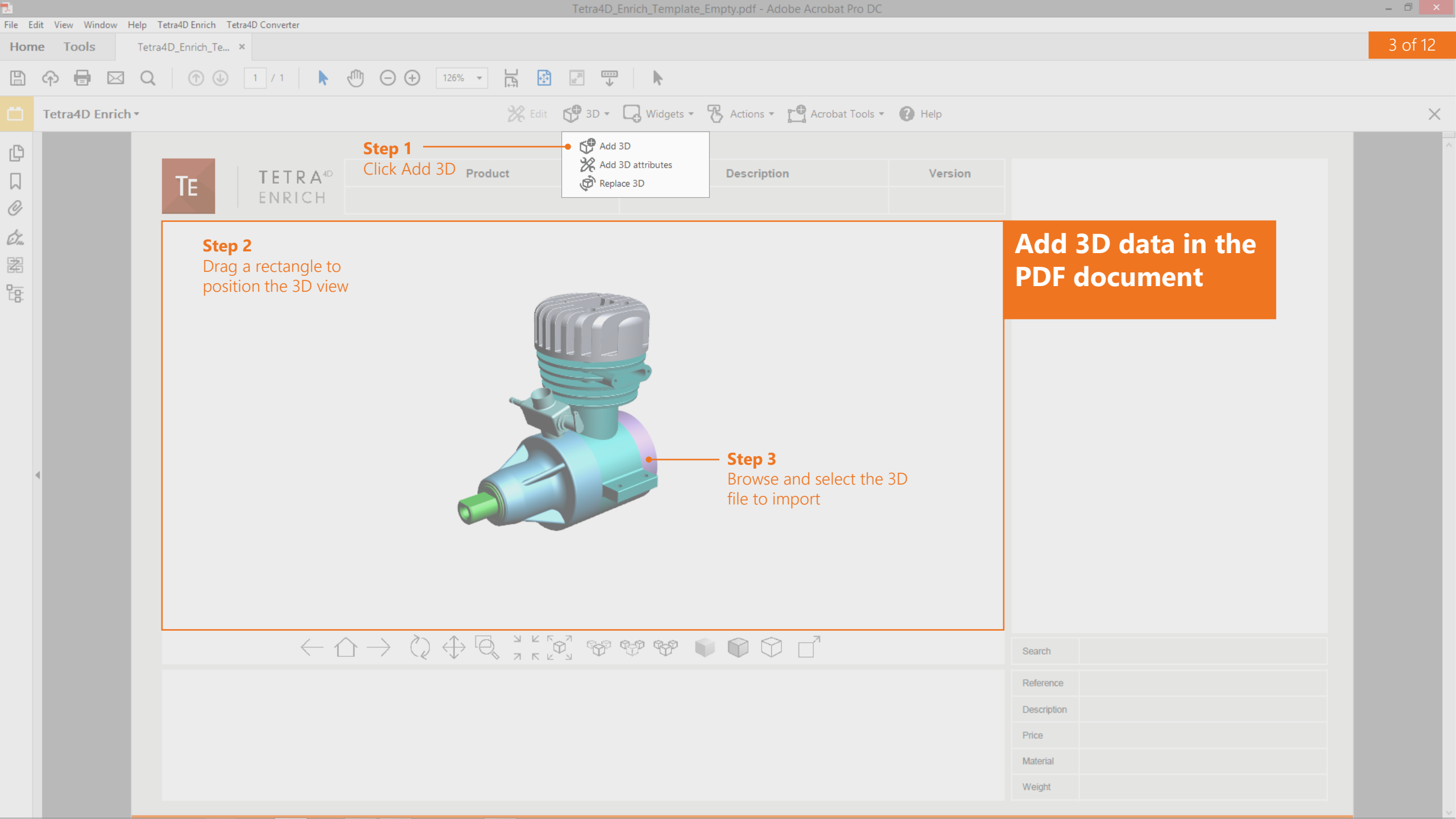
Reference

Description

Price

Material

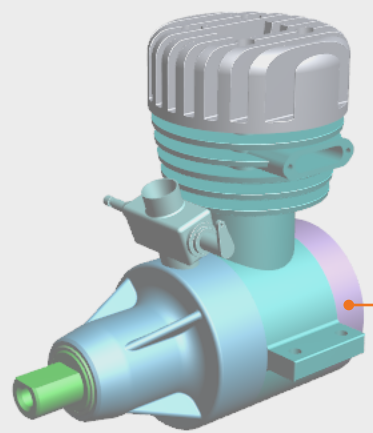
Weight



Step 1
Click Add 3D

- Add 3D
- Add 3D attributes
- Replace 3D

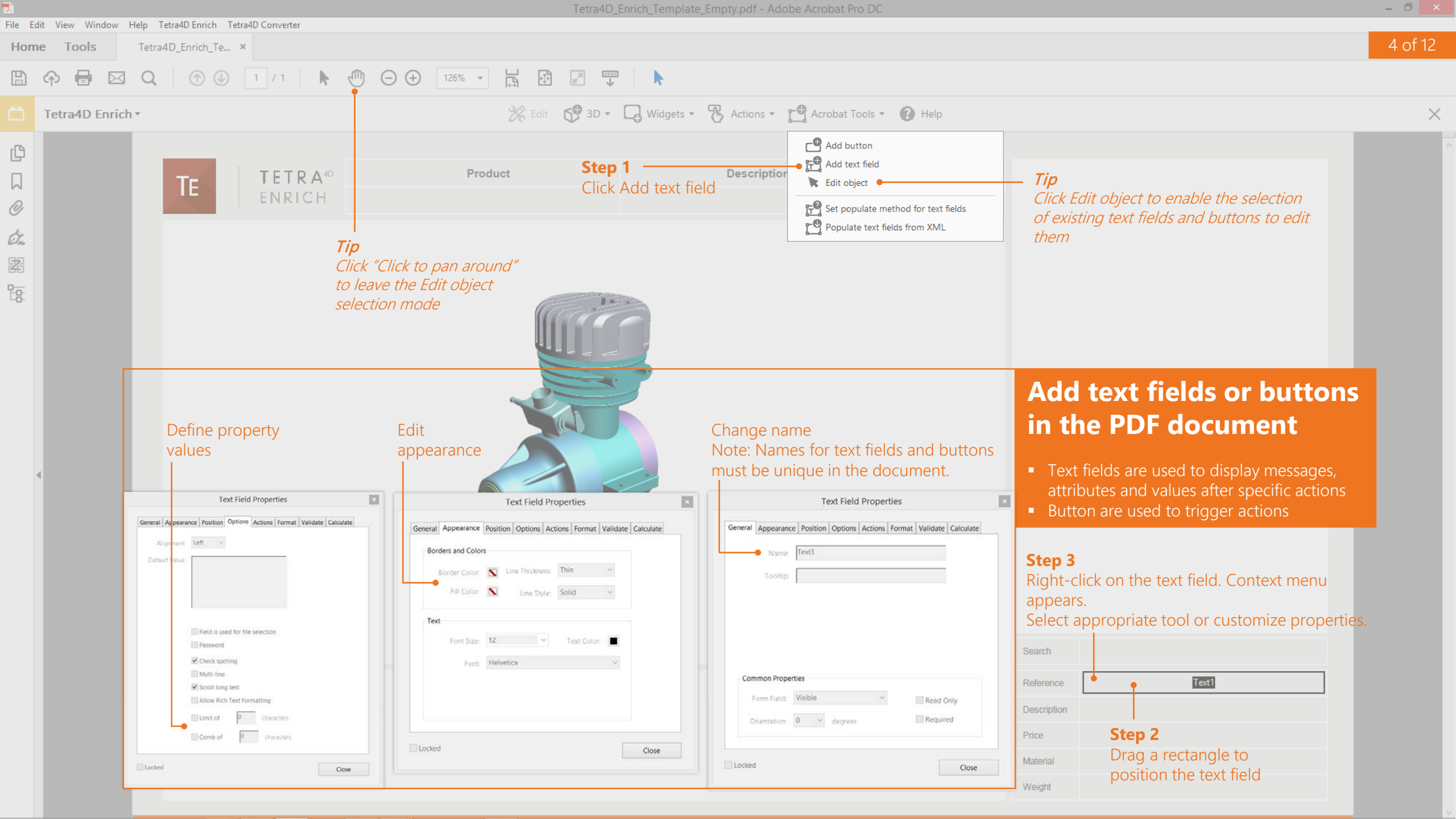
Step 2
Drag a rectangle to position the 3D view



Step 3
Browse and select the 3D file to import

Add 3D data in the PDF document

Search	
Reference	
Description	
Price	
Material	
Weight	



Step 1
Click Add text field

Tip
Click "Click to pan around"
to leave the Edit object
selection mode

Tip
Click Edit object to enable the selection
of existing text fields and buttons to edit
them

Define property
values

Edit
appearance

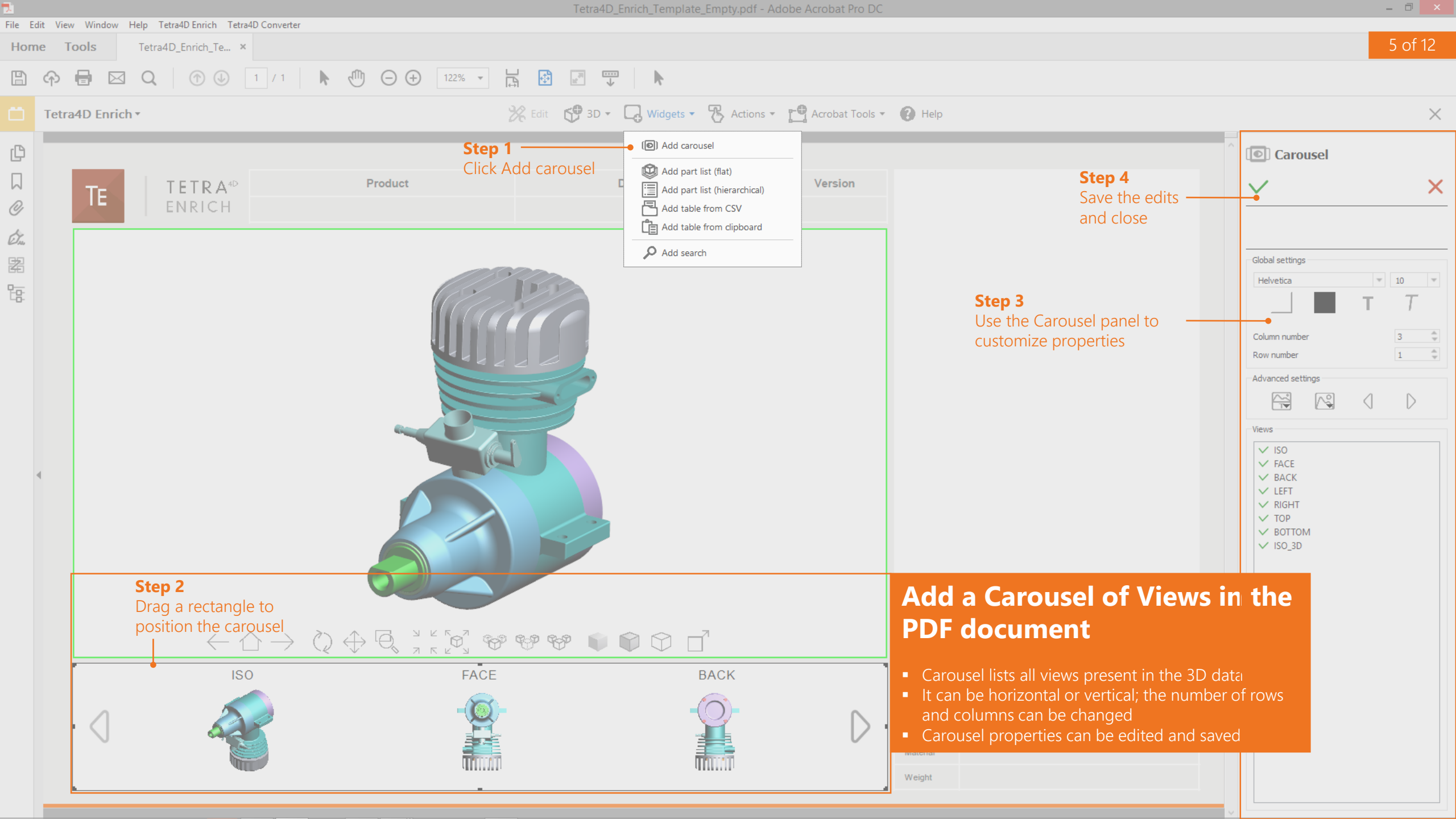
Change name
Note: Names for text fields and buttons
must be unique in the document.

Add text fields or buttons in the PDF document

- Text fields are used to display messages,
attributes and values after specific actions
- Button are used to trigger actions

Step 3
Right-click on the text field. Context menu
appears.
Select appropriate tool or customize properties.

Step 2
Drag a rectangle to
position the text field



Step 1
Click Add carousel

- Add carousel
- Add part list (flat)
- Add part list (hierarchical)
- Add table from CSV
- Add table from clipboard
- Add search

Step 4
Save the edits and close

Carousel

Global settings

Helvetica 10

Column number 3

Row number 1

Advanced settings

Views

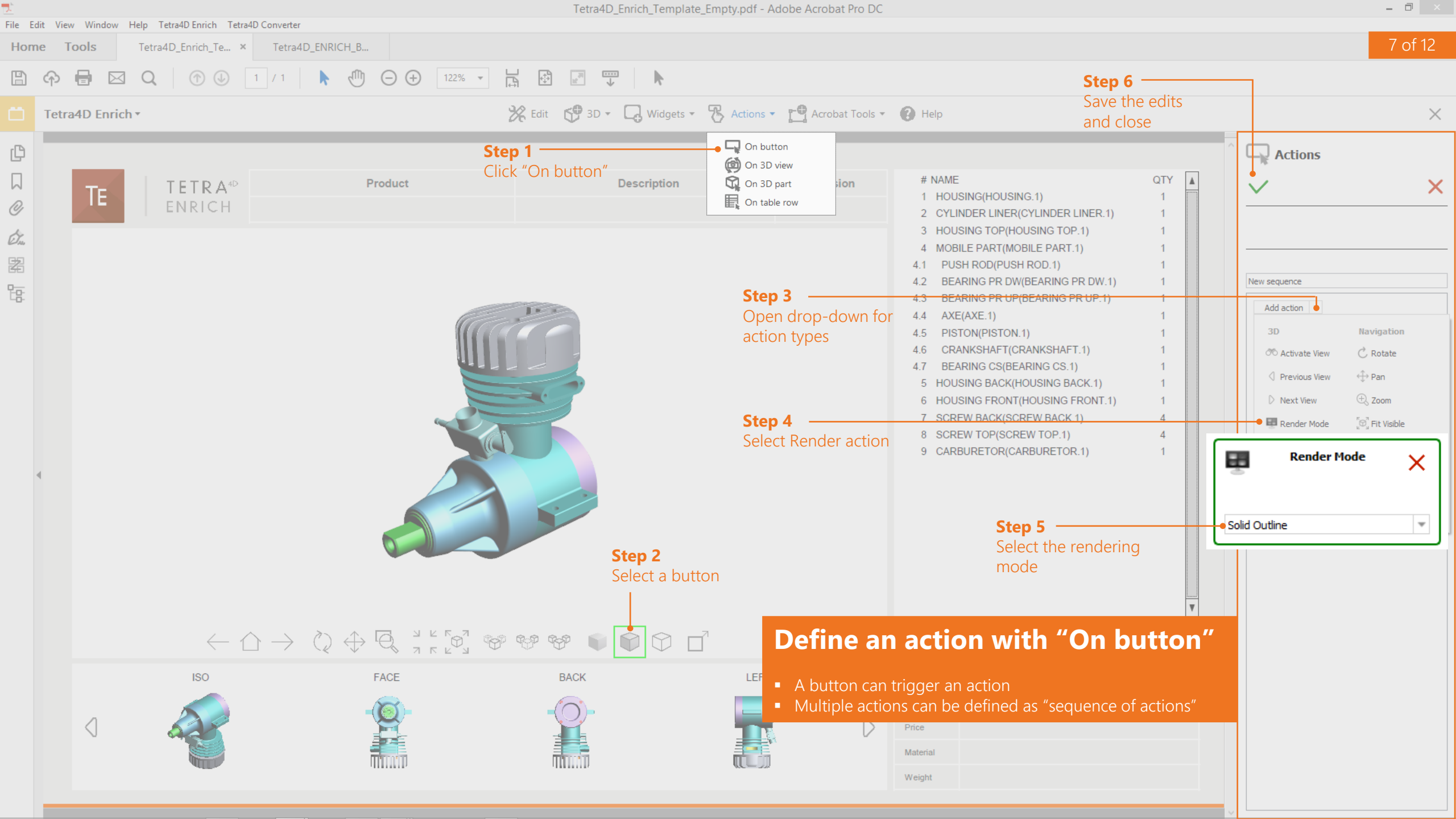
- ✓ ISO
- ✓ FACE
- ✓ BACK
- ✓ LEFT
- ✓ RIGHT
- ✓ TOP
- ✓ BOTTOM
- ✓ ISO_3D

Step 3
Use the Carousel panel to customize properties

Step 2
Drag a rectangle to position the carousel

Add a Carousel of Views in the PDF document

- Carousel lists all views present in the 3D data
- It can be horizontal or vertical; the number of rows and columns can be changed
- Carousel properties can be edited and saved



Step 1
Click "On button"

- On button
- On 3D view
- On 3D part
- On table row

Step 3
Open drop-down for action types

Step 4
Select Render action

Step 2
Select a button

Step 6
Save the edits and close

Step 5
Select the rendering mode

Define an action with "On button"

- A button can trigger an action
- Multiple actions can be defined as "sequence of actions"

Step 7 — save the edits and close

Step 1

Click "On 3D part"

- On button
- On 3D view
- On 3D part
- On table row

Step 2

Open drop-down
for action types

Step 3 —

Select
Set Text In Field

Step 5

Click Add the selected attribute

Step 4

Select a text field

Actions

Select a text field or a button

New sequence

Add action

Document

 Set Text In Field

T **Set Text in Field**

Step 6

Select one of the CAD attributes

Define an action with "On 3D part"

FileEditViewWindowHelpTetra4D EnrichTetra4D Converter

HomeToolsTetra4D_Enrich_Te... x

9 of 12

1 / 1126%123456789101112131415161718192021222324252627282930313233343536373839404142434445464748495051525354555657585960616263646566676869707172737475767778798081828384858687888990919293949596979899100

Tetra4D Enrich

Edit3DWidgetsActionsAcrobat ToolsHelp

TE

TETRA^{4D} ENRICH

Step 1

Click Add 3D attributes

Add 3D

Add 3D attributes

Replace 3D

Description

Version

NAME

QTY

1 HOUSING(HOUSING.1)

1

2 CYLINDER LINER(CYLINDER LINER.1)

1

3 HOUSING TOP(HOUSING TOP.1)

1

4 MOBILE PART(MOBILE PART.1)

1

4.1 PUSH ROD(PUSH ROD.1)

1

4.2 BEARING PR DW(BEARING PR DW.1)

1

4.3 BEARING PR UP(BEARING PR UP.1)

1

4.4 AXE(AXE.1)

1

4.5 PISTON(PISTON.1)

1

4.6 CRANKSHAFT(CRANKSHAFT.1)

1

4.7 BEARING CS(BEARING CS.1)

1

5 HOUSING BACK(HOUSING BACK.1)

1

ING FRONT(HOUSING FRONT.1)

1

W BACK(SCREW BACK.1)

4

W TOP(SCREW TOP.1)

4

URETOR(CARBURETOR.1)

1

Step 2

Select the XML file with attributes to be imported

MicroEngine_Add3DAttributes.xml

Value of the attribute

Name of a new attribute "SUPPLIER"

For mapping, Key is an attribute of CAD parts

<ATTRIBUTE key="ItemNumber" attribute_value="H7894561">

<NEW_ATTRIB name="SUPPLIER" value="Supplier D" />

<NEW_ATTRIB name="SUPPLIER_REFERENCE" value="RefD02" />

<NEW_ATTRIB name="Price" value="10.20" />

</ATTRIBUTE>

<ATTRIBUTE key="ItemNumber" attribute_value="C4874562">

<NEW_ATTRIB name="SUPPLIER" value="Supplier G" />

Step 3

Check result of the attribute merge after import

Step 4

Click OK to finish

Tetra4D Enrich

Attributes successfully loaded !

The PDF document have been updated according to the imported attributes.

21 node(s) updated. 0 node(s) not found.

3 attributes added (Price,SUPPLIER,SUPPLIER_REFERENCE).

A complete log file has been created in C:/ENRICH/MicroEngine/MicroEngine_Add3DAttributes.xml

OK

Import attributes from a file

Merge attributes from an external source file with the attributes in the 3D data

The XML file containing the attributes needs to conform with a defined format that enables mapping with the 3D data

LEFT

Reference

Description

Price

Material

Weight

Edit the table to show an imported attribute

- Show imported and merged attributes in the table along with other attributes for the 3D data

Step 1
Select the Edit Tool

Step 2
Select the table

Step 4
Click on the middle column, click
Add a column to the right

Step 5
Click on the new column,
click Fill this column with
attribute and select an
attribute in the list

Step 3
Select Edit mode

Step 6
Save and close the table

#	NAME	QTY
1	HOUSING(HOUSING.1)	1
2	CYLINDER LINER(CYLINDER LINER.1)	1
3	HOUSING TOP(HOUSING TOP.1)	1
4	MOBILE PART(MOBILE PART.1)	1
4.1	PUSH ROD(PUSH ROD.1)	1
4.2	BEARING PR DW(BEARING PR DW.1)	1
4.3	BEARING PR UP(BEARING PR UP.1)	1
4.4	AXE(AXE.1)	1
4.5	PISTON(PISTON.1)	1
4.6	CRANKSHAFT(CRANKSHAFT.1)	1
4.7	BEARING CS(BEARING CS.1)	1
5	HOUSING BACK(HOUSING BACK.1)	1
6	HOUSING FRONT(HOUSING FRONT.1)	1
7	SCREW BACK(SCREW BACK.1)	4
8	SCREW TOP(SCREW TOP.1)	4
9	CARBURETOR(CARBURETOR.1)	1

Table

Global settings

Helvetica 10

Emphasize

☒ Emphasize with color and opacity

☐ Emphasize with color

☐ Emphasize with isolate

Opacity

☐ Enable blinking

Period 0,5 Number 5

Column Alignment

Add or remove columns

3D Attributes / 3D Mapping

#Computed QTY

#Computed #

#Computed NAME

Description

InstanceName

ItemNumber

Material

Nomenclature

PartNumber

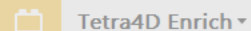
Price

Revision

SUPPLIER

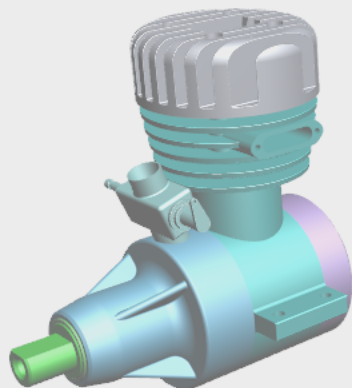
SUPPLIER_REFERENCE

Source



Step 1

Click Add search



Add a Search widget in the PDF document

#	NAME	SUPPLIER	QTY
1	HOUSING(HOUSING.1)	Supplier D	1
2	CYLINDER LINER(CYLINDER LINER.1)	Supplier G	1
3	HOUSING TOP(HOUSING TOP.1)	Supplier A	1
4	MOBILE PART(MOBILE PART.1)		1
4.1	PUSH ROD(PUSH ROD.1)	Supplier F	1
4.2	BEARING PR DW(BEARING PR DW.1)	Supplier D	1
4.3	BEARING PR UP(BEARING PR UP.1)	Supplier C	1
4.4	AXE(AXE.1)	Supplier A	1
4.5	PISTON(PISTON.1)	Supplier E	1
4.6	CRANKSHAFT(CRANKSHAFT.1)	Supplier F	1
4.7	BEARING CS(BEARING CS.1)	Supplier B	1
5	HOUSING BACK(HOUSING BACK.1)	Supplier C	1
6	HOUSING FRONT(HOUSING FRONT.1)	Supplier B	1
7	SCREW BACK(SCREW BACK.1)	Supplier G	4
8	SCREW TOP(SCREW TOP.1)	Supplier A	4
9	CARBURETOR(CARBURETOR.1)	Supplier E	1

Step 3

Use the Search panel to customize properties

Step 4

Define the available search criteria



Search

Text to search

Reference

Description

Price

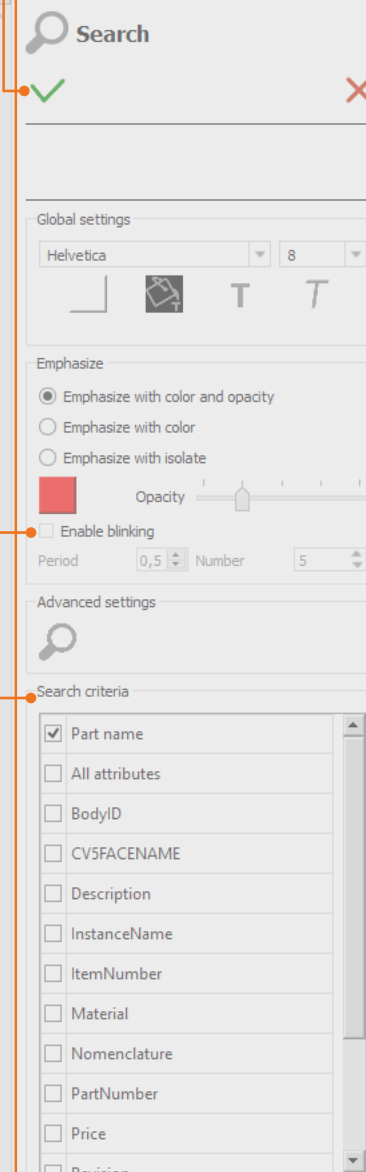
Material

Weight

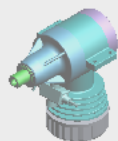
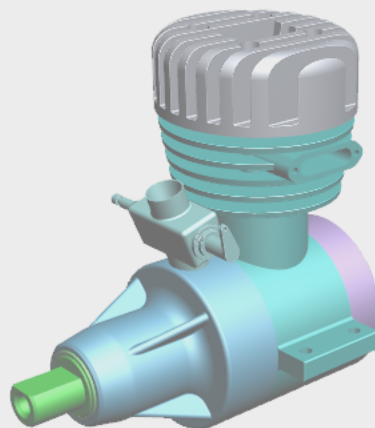
Step 2
Drag a rectangle to position the search

Step 2

Drag a rectangle to position the search



Product	Description



- Add button
- Add text field
- Edit object
- Set populate method for text fields
- Populate text fields from XML

Step 2
Select a text field

Step 1
Click Set populate method for text fields

Step 3
Use the Populate Method panel to define how the field will be populated

Step 4
Save the edits and close

Populate Method

Select a 3D file attribute

Select source:

- ☐ CAD model attribute
☒ File attribute
☐ XML

Attribute or XML key

Attributes list

3D file Name
 3D file Name without extension
 3D file Name with full path
 3D file Extension
 3D file Creation date
 3D file Last modification date
 3D file size (Bytes)
 3D file size (KB)
 3D file size (MB)

Set populate method for text fields

- Text fields from title block can be populated with CAD model attributes, CAD file attributes, or imported from an XML file
- The text field is immediately updated when using CAD model or file attribute method
- The text field is populated by the "Populate text fields from XML" feature when using the XML method