



Tetra4D Converter

Version 5.1

Release Notes

Details of new features, updated format support and bug fixes for Tetra4D Converter™

Table of Contents

- Version 5.13
 - Definition of Release Types.....3
 - Version Information.....3
 - Installation3
 - Language Support Overview.....3
 - Acrobat Pro Compatibility4
- System Requirements4
- Licensing.....4
 - Important message for Tetra4D Converter existing customers4
 - New Tetra4D Converter customers5
 - Information about the licensing management solution5
- Format Support.....7
- New Features/Enhancements8
 - Support of Adobe Acrobat Pro DC.....8
 - Autodesk Inventor9
 - CATIA V59
 - PTC Creo.....9
 - PMI support9
- Bug Fixes9

Version 5.1

Definition of Release Types

We define each release type as follows:

- **Major release:** A major release associated with an incremented release number (e.g. 3 or 4) and an approximate 12 month product cycle.
- **Minor release:** An update between major releases that may include support for new file formats, new versions of currently supported formats, and bug fixes.
- **Out of cycle patch:** An unscheduled update. These contain few functional updates with the intention to limit impact.

Version Information

Item	Version Number
Tetra4D Converter	5.1

Installation

This version can be installed over any prior installation of Tetra4D Converter. For more installation information, please refer to the [Tetra4D Converter Installation Guide](#) or visit our support page.

Language Support Overview

Tetra4D Converter provides support for multiple languages as noted in the table below. However, the language used is controlled by the local Adobe Acrobat® installation. If there is a Tetra4D Converter language option that matches the Acrobat installation, then that language is used; if not, Tetra4D Converter defaults to English.

Tier 1 and Tier 2 are as defined by Adobe Systems.

Tier	Tetra4D Converter Supported Languages
Tier 1	English, French, German, Japanese
Tier 2	Brazilian Portuguese, Italian, Korean, Spanish

Acrobat Pro Compatibility

The Tetra4D Converter is a plug-in for Adobe Acrobat Pro. The following table provides information about tested version compatibility. Note that older versions of Tetra4D Converter may work with newer Acrobat Pro releases, even if compatibility is not explicitly mentioned here.

Tetra4D Converter	Compatible Acrobat Pro X/XI/DC Versions
5.0 and 5.1	Acrobat DC: 2015.000.00000 - to 2015.006.30060 (Classic Track) - to 2015.008.20082 (Continuous Track) Acrobat 11.0.0 to 11.0.12 Acrobat 10.0.0 to 10.1.15
4.1 and 4.2	Acrobat 11.0.0 to 11.0.6 Acrobat 10.0.0 to 10.1.9
4.0	Acrobat 11.0.0 to 11.0.5 Acrobat 10.0.0 to 10.1.8

If you have an earlier version of Tetra4D Converter (prior to 4.0) and need compatibility information, please contact support by visiting our support page.

System Requirements

Please refer to the installation guide to access the system requirements.

Please notice that since version 5.0, the Tetra4D Converter no longer supports the following Microsoft® Windows® operating systems

- Windows XP
- Windows Server 2003

Licensing

Important message for Tetra4D Converter existing customers

Tetra4D Converter 5.1 comes with a new license management solution and requires a new license to run the software.

Even if you already installed and licensed version 4.2 or version 5.0, you will need to change your license and activate the seats when **Tetra4D Converter 5.1** is installed.

Notice that if you are under regular maintenance, you should automatically receive a serial number for **Tetra4D Converter 5.1** in an email from tetra4d.com.

Please carefully read the [Tetra4D Converter Installation Guide](#) for explanations on how to activate your licenses.

Note that the Tetra4D Converter will run in trial mode for 28 days after installation, providing you with

an opportunity to use the product temporarily without a license key.

New Tetra4D Converter customers

You should receive a serial number in an email from tetra4d.com when you purchase the Tetra4D Converter.

Please carefully read the [Tetra4D Converter Installation Guide](#) for explanations on how to activate your licenses.

Note that the Tetra4D Converter will run in trial mode for 28 days after installation, providing you with an opportunity to use the product temporarily without a license key.

You will have full functionality of the software during the trial period. If you experience any problem during the installation and activation process, please contact support by visiting our support page.

Information about the licensing management solution

A new licensing management solution has been implemented to offer more flexibility and autonomy for customers to manage their licenses:

- Licensing the Tetra4D Converter can be done directly by customers, without requiring customers to contact Tetra4D support.
- Online and offline activations are supported
 - o Online activation requires a few actions and is fully performed within the product (no support request, no email communication).
 - o In case of offline activation, information to activate the seat has to be communicated through email.
- A single serial number can be used to activate multiple seats of Tetra4D Converter
 - o When purchasing multiple seats of Tetra4D Converter, a single serial number will be generated to activate all of the purchased seats.
- Activation / deactivation is enabled to make it possible to transfer a license from a computer to another one
 - o Case where a computer is no longer in use and the license has to be transferred to another system.
 - o The transfer can be performed directly by the customer.

Remark:

- The transfer of a license has to be occasional, and is only allowed in case of:
 - o Computer crash
 - o Computer change

The Tetra4D support team is available to answer any question and assist whenever needed.

To receive assistance from the support team, please contact support by visiting our support page.

Format Support

This release supports reading the following 3D file formats:

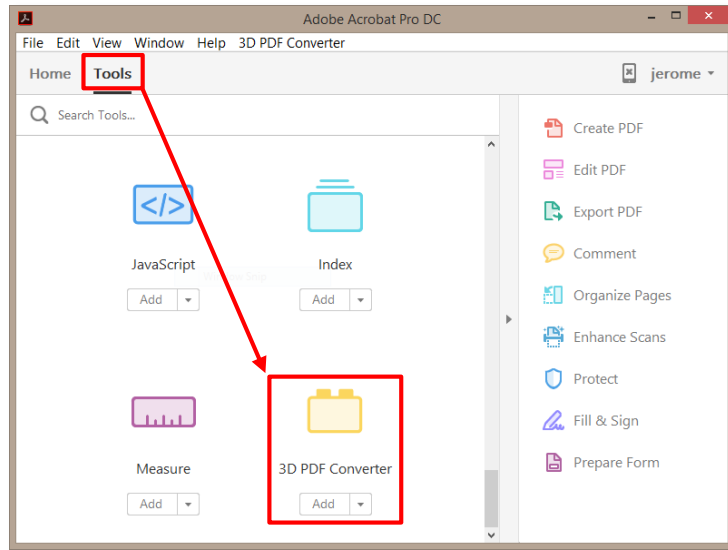
Format	Version	Extensions
ACIS (SAT)	Up to v23.0	SAT, SAB
Autodesk Inventor	Up to 2016	IPT, IAM
CATIA V4	Up to 4.2.5	MODEL, SESSION, DLV, EXP
CATIA V5	R4 to V5-6R2015	CATDrawing, CATPart, CATProduct, CATShape, CGR
CATIA V6	2011 to 2013	3DXML
I-deas	Up to 13.x (NX 5), NX I-deas 6	MF1, ARC, UNV, PKG
IGES	5.1, 5.2, 5.3	IGS, IGES
Industry Foundation Classes (IFC)	IFC2x Editions 2, 3 and 4	IFC, IFCZIP
JT	Up to version 10.0	JT
Parasolid (X_T)	Up to v27.0	X_B, X_T, XMT, XMT_TXT
PRC	All Versions	PRC
PTC Creo	Elements/Pro 5.0 Parametric 3.0	ASM, NEU, PRT, XAS, XPR
PTC Pro/Engineer	Up to Wildfire 5	ASM, NEU, PRT, XAS, XPR
Rhino	4, 5	3DM
Siemens PLM Software NX	Unigraphics V11.0 to NX 10	PRT
Solid Edge	V19 - 20, ST - ST7	ASM, PAR, PWD, PSM
SolidWorks	Up to 2015	SLDASM, SLDPRT
STEP	AP 203 E1/E2, AP 214, AP 242	STP, STEP, STP.Z
Stereo Lithography (STL)	All Versions	STL
Universal 3D (U3D)	ECMA-363 (1 st to 3 rd editions)	U3D
VDA-FS	Version 1.0 and 2.0	VDA
VRML	V1.0 and V2.0	WRL, VRML

New Features/Enhancements

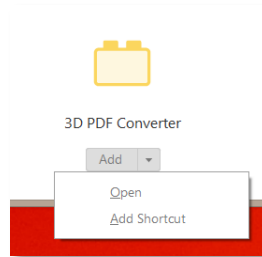
This release of Tetra4D Converter adds the following new or improved functionality:

Support of Adobe Acrobat Pro DC

Adobe Acrobat Pro DC introduces a new user interface and the Tetra4D Converter fully integrates with this enhancement. In the new workspace, you can find the Tetra4D Converter Tools in the following area:



The button below the Tetra4D Converter icon allows you to:



- **Open:** Open the Tetra4D Converter tools.
- **Add / Add Shortcut:** Add the Tetra4D Converter shortcut in the right pane.
- **Remove Shortcut:** Remove the existing shortcut from the right pane.

For more information about the new Acrobat Pro DC user interface, please refer to:

<https://helpx.adobe.com/acrobat/using/workspace-basics.html>

Autodesk Inventor

- **Support for Autodesk Inventor 2016 files**
- **Enhanced support of B-rep reading**

CATIA V5

- **Support for CATIA V5-6R2015 (V5R25)**

PTC Creo

New reading options have been implemented:

- **Compute home view**

This option sets the PDF home view to be the same as the Creo default view
- **Use Accelerator Files Only**

This option defines the reading behavior for assembly reading, if Accelerator files are available.
- **Read Exploded State as views**

By using this option, Creo “Exploded State” are not considered as Exploded views, but they will be handle as regular exploded views within Tetra4D Converter to facilitate their use.
- **Hide skeletons**

This option forces the visibility of “Skeletons “ to true or false for all the supported versions of Creo in order to homogenize their display (which may differ from one Creo version to another).

PMI support

- **Enhancements of PMI support**

Formats: CATIA V5, NX, Creo, JT

Bug Fixes

The 5.1 release of the Tetra4D Converter fixes several customer reported issues. Please contact support by visiting our support page if you have questions about any specific issue.